

1 PHASE 2 WIRE TRACK DATASHEET

Model	Three Line Track System 4B
Sizes	1000 x 35 x 20mm, 1500 x 35 x 20mm, 2000 x 35 x 20mm
Mounting	Surface mounted or suspended
Material	Aluminum alloy, copper wiring
Authentication	CE, ROHS
Environment	Indoor
Notes	Strip is made of insulating PVC, conductive with copper wire.



SPECIFICATION

Size (mm)	34 x 19,5mm
-----------	-------------

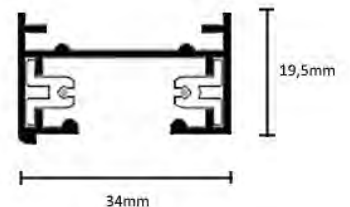
ELECTRICAL

Max. safe load (Wattage)	2000W
Transformer mounting	External
Transformer type	Electronic
Maximum safe current	10A
Voltage	220-240V AC

Colors:

- White
- Black

Dimensions: 34 x 19,5mm

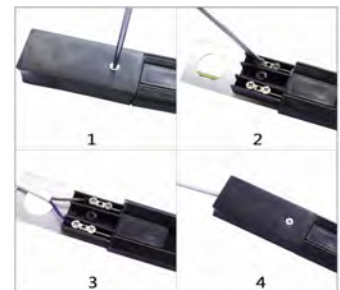


PHYSICAL

Construction material	aluminum, copper
Gravity test	10kg weight
Working temperature	-30 to +40 °C
Warranty	3 years from purchase date



For 1-phase track the power supply is attached at the end on of a track.



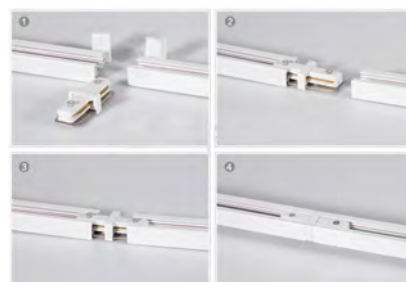
CERTIFICATIONS



1 PHASE 2 WIRE TRACK CONNECTORS

These connectors are suitable only for 1 phase 2 wire tracks.

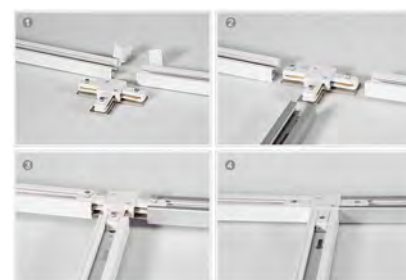
Model	1P2W track connector I
Color	Black, White
Mounting	Surface mounted
Material	Aluminum alloy, copper wiring
Authentication	CE, ROHS
Environment	Indoor
Guarantee	3 years



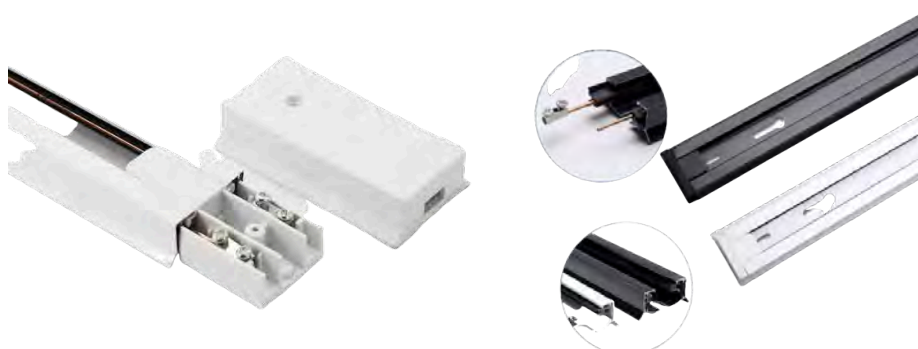
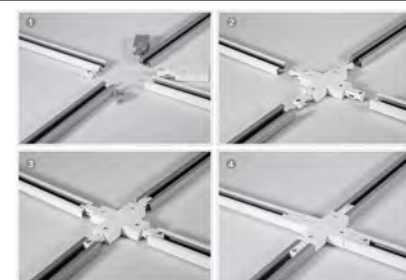
Model	1P2W track connector L
Color	Black, White
Mounting	Surface mounted
Material	Aluminum alloy, copper wiring
Authentication	CE, ROHS
Environment	Indoor
Guarantee	3 years



Model	1P2W track connector T
Color	Black, White
Mounting	Surface mounted
Material	Aluminum alloy, copper wiring
Authentication	CE, ROHS
Environment	Indoor
Guarantee	3 years



Model	1P2W track connector X
Color	Black, White
Mounting	Surface mounted
Material	Aluminum alloy, copper wiring
Authentication	CE, ROHS
Environment	Indoor
Guarantee	3 years



CERTIFICATIONS

