

# LED Track Light LEIPZIG Datasheet



Number of heads	1
Mounting	Track mounting
Lamps description	LED 30W 2700K-6000K, CRI 90+
Luminaire luminous flux	100W/Lm 3000Lm
Voltage (V)	220/240
Environment	Indoor
Notes	LED Track Light Leipzig is designed with a modern and a efficient look where the driver is located inside of the housing.

## OPTICAL

Reflector finish	Aluminum
Aiming	Adjustable 350 degrees
Light distribution symmetry	Symmetric
Beam angle	24° Medium
Color temperature	2700K-6000K

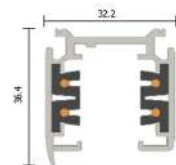
## ELECTRICAL

Wattage	30W
Transformer mounting	Integral
Transformer type	Electronic
Frequency	50-60HZ
Voltage	110-240V AC

## PHYSICAL

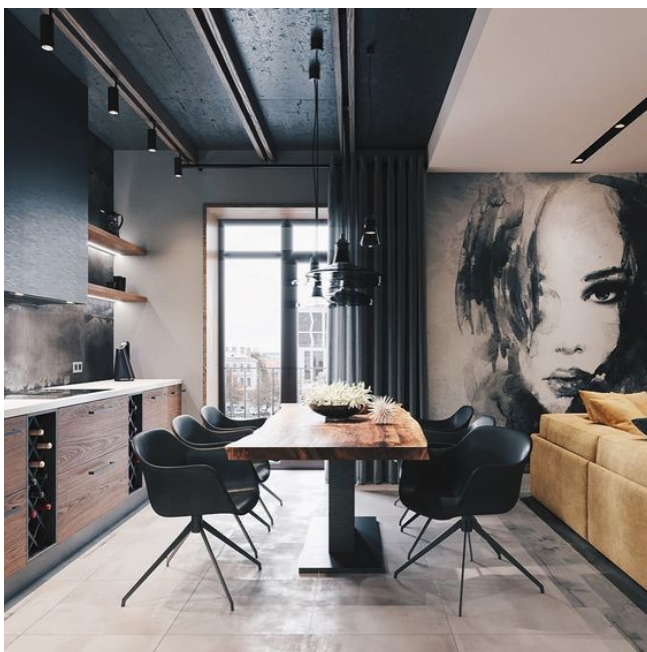
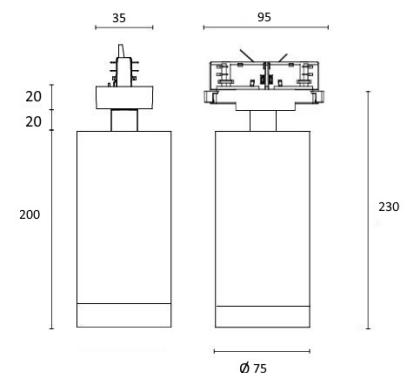
Spot diameter (mm)	Ø 75
Construction material	6063 Aluminium
Weight (kg)	1,0
Luminaire lifespan	50 000h
LED module	PHILIPS/BRIDGELUX COB LED 100 lm/W LIFUD
Driver	Flicker free, PHILIPS SLIM, ALL-LOOKING
Working temperature	Optional drivers: DALI, DIM Operation: -30 to +40 °C

LED light to be installed on 3-phase 4 wire track.



- White
- Black

Dimensions: 200 x Ø75mm



## CERTIFICATIONS

