



LED Track Light MINI Datasheet



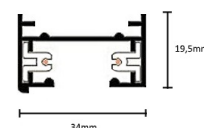
| | |
|-------------------------|--|
| Number of heads | 1 |
| Mounting | Track mounting |
| Lamps description | LED 7 W, CRI 80+ |
| Luminaire luminous flux | 100 lm/W |
| Voltage (V) | 220-240 |
| Environment | Indoor |
| Notes | LED Track Light MINI is designed with a modern and an efficient look where the driver is located outside of the housing. |



OPTICAL

| | |
|-----------------------------|-------------------------|
| Reflector finish | Aluminum |
| Aiming | Adjustable 350° and 90° |
| Light distribution symmetry | Symmetric |
| Beam angle | 30° |
| Color temperature | 3000K |

LED light to be installed on 1-phase
2 wire track.



ELECTRICAL

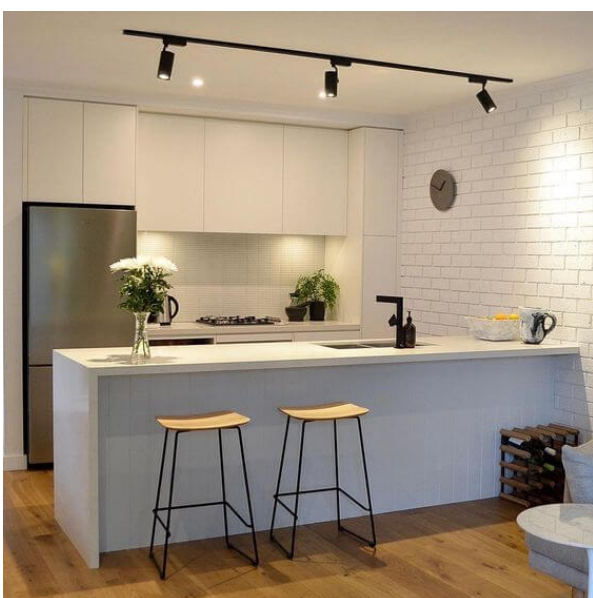
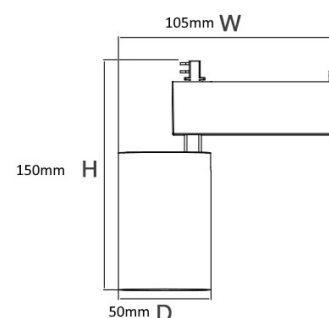
| | |
|----------------------|------------|
| Wattage | 7 W |
| Transformer mounting | Integral |
| Transformer type | Electronic |
| Frequency | 50-60 HZ |
| Voltage | 220-240 V |

● Black ● White

Dimensions: Ø50 x 140mm

PHYSICAL

| | |
|-----------------------|----------------------------|
| Spot diameter (mm) | Ø 50 |
| Construction material | Aluminium |
| Weight (kg) | 0,5 |
| Luminaire lifespan | 30 000h |
| LED module | PHILIPS/BRIDGELUX COB LED |
| Driver | LIFUD flicker free |
| Working temperature | 0 to +40°C |
| Warranty | 3 years from purchase date |



CERTIFICATIONS

