

Features

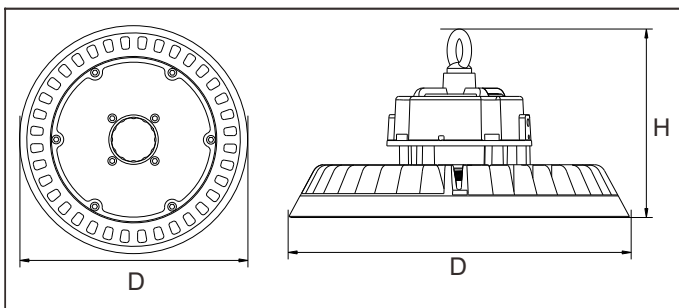
- Housing: Die-cast
- Thermal Conductivity: 96 W/m·K
- Led: Sanan
- CRI: Ra>70 (80 for option)
- SDCM: <6
- Power Factor: >0.95
- THD: <15
- Driver: Sosen
- Driver Efficiency: >93%
- Protection: OTP, OCP, OVP, SCP
- Surge Protection: 4KV
- Waterproof: IP65
- Impact Test: IK08
- Electrical: 100-277V, 50/60Hz
- Operating Temperature: -40~60°C
- TM21: L80B10>50,000H
- Lifetime: 50,000H



Functions

ZigBee · PWM · 0/1~10V · Micro-wave

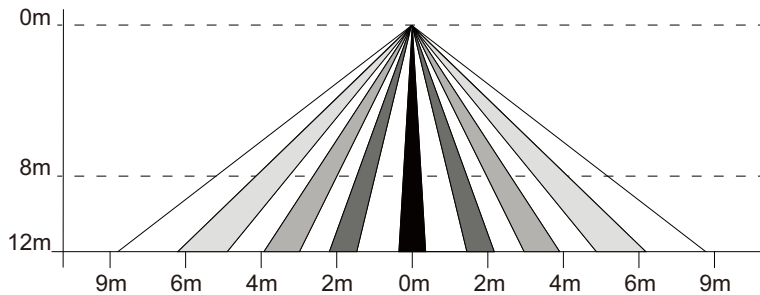
Optical options:



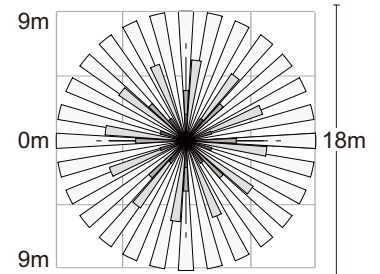
Watt	Voltage	Lumen	CRI	IP	Dimension
100W	100~277V	20000LM	>70(80)	IP65	D308*H181
120W	100~277V	24000LM	>70(80)	IP65	D308*H181
150W	100~277V	30000LM	>70(80)	IP65	D308*H181
200W	100~277V	40000LM	>70(80)	IP65	D354*H183

Detection

Coverage Side View

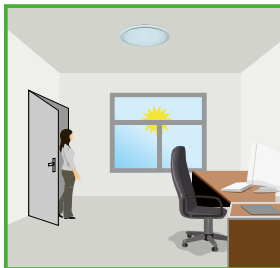


Coverage Top View



DIMMING FUNCTION

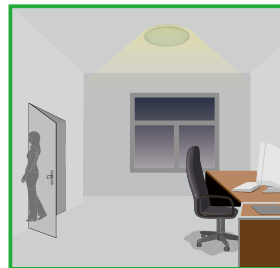
This function inside the motion sensor to achieve tri-level control, for some areas which require a light change notice before switch-off. The sensor offers 3 levels of light: 100%-->dimmed light (natural light is insufficient) -->off; and 2 periods of selectable waiting time: motion hold-time and stand-by period; Selectable daylight threshold and freedom of detection area.



With sufficient natural light, the light does not switch on when presence is detected.



With insufficient natural light, the sensor switches on the light automatically when presence is detected.



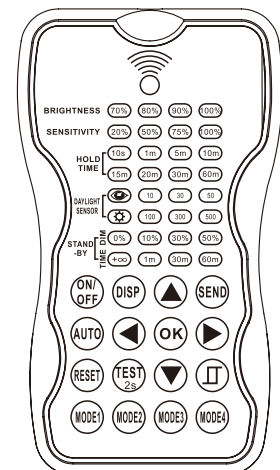
After hold-time, the light dims to stand-by level if the surrounding natural light is below the daylight threshold.



Light switches off automatically after the stand-by period elapses.

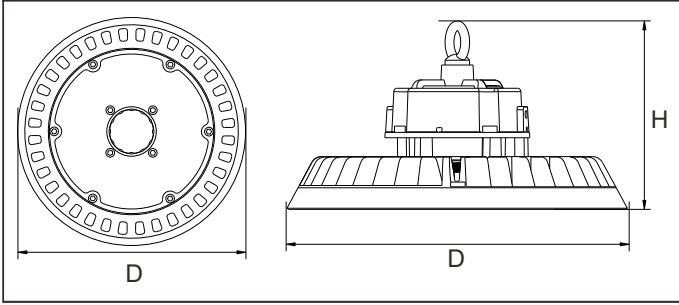
Re-programmable

Fixed on up to 12 meters after installation, the high bay will be not easy to adjust the working program. But the user may not satisfied with the performance and sensitivity or Dim level is needed to adjust for different season. In order to make the extra work easy and no machines are needed, one remote control is provided to re-program the sensor.



Distance range: 12m
Battery: AAAx2

Packing



Model	Outer Carton(mm)			QTY / CTN	NW/CTN	GW/CTN
100W	365	365	150	1	2.20	3.00
120W	365	365	150	1	2.20	3.00
150W	365	365	150	1	2.20	3.00
200W	410	410	155	1	2.90	3.90